



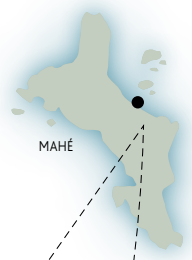
FARQUHAR
ALPHONSE FISHING CO.
SEYCHELLES



Farquhar Atoll

FACT SHEET

THE MOST DIVERSE FISHERY IN THE OUTER ISLANDS OF THE SEYCHELLES

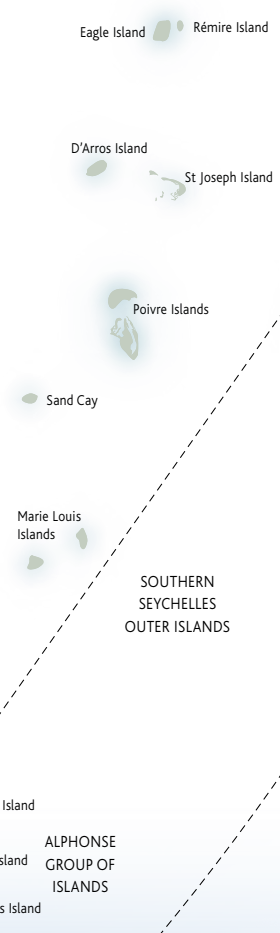


Farquhar Atoll

Farquhar Atoll is the most southerly atoll in the Seychelles chain of islands lying just over 700 km to the southwest of the main island Mahé. This remote atoll has a total area of 170.5 km², which is 18 km north to south and nine km east to west. The atoll is made up of a large ear-shaped lagoon surrounded by 10 islands, vast white sand flats, coral fingers and outcrops making for a diverse and wild fishery.

AT A GLANCE

- Located 380 nautical miles southwest of Mahé in the Seychelles.
- Situated only 10° south of the equator.
- Large ear-shaped lagoon surrounded by 10 islands, vast white sand flats, coral fingers and outcrops.
- One of the most remote inhabited islands in the Seychelles.
- Accommodate up to 10 fly fishermen per trip.
- Similar time zone to Europe, Africa and the Middle East.
- The only Alphonse Fishing Co. Atoll where you are able to target bumphead parrotfish.



✈ One hour scheduled private flight to Alphonse Island

✈ One hour 45 minute scheduled private flight to Farquhar Atoll

✈ 45 minute scheduled private flight from Alphonse to Farquhar







FARQUHAR ATOLL

Remote, Pristine & Untouched...

The total island land mass is 7.5 km with a serviced concrete landing strip situated on the most northerly island. The main group of islands form a long curve which describes the eastern side of the atoll. Largest of these are Isle du Nord and Ile du Sud, with the smaller Manaha gaps and islands between them. Further south is Goelette and to the open western side of the atoll lies the small group known as Trois Îles. The large ear-shaped lagoon provides easy access to the countless flats, channels and surf zones which make Farquhar such a diverse fishery.

A TYPICAL DAY

On a Fishing Expedition to Farquhar

DAY 1

Your charter flight departs Mahé from the IDC hangar and lands on Farquhar one-hour forty-five minutes later. Flights may be diverted to Alphonse island on occasions, which would entail a one-hour flight to Alphonse Island, a half an hour break on the ground and then a further forty-five minute flight to Farquhar Atoll. The group is then transferred to the Farquhar Guest House for orientation and tackle set up.

DAY 2-6

Breakfast at 07h00, teams to be ready to leave the camp at 08h00 for fishing. There is a choice between a packed lunch or lunch at the guest house. At 16h30 your team will head back to the camp. Pre-dinner drinks will commence at 18h00 and dinner will follow.

DAY 7

Breakfast at 07h00, teams to be ready to leave the camp at 08h00 for fishing. There is a choice between a packed lunch or lunch at the guest house. At 16h30 your team will head back to the camp. There will be time in the evening to de-tackle your gear with snacks and cold refreshments so that you are able to pack your rods, reels and fishing gear away in preparation for departure the following morning.

DAY 8

The departure time of the flight will be confirmed with you at dinner the evening before departure day. You will be transferred to the airport where you will board the Charter flight, possibly divert to Alphonse, landing at the IDC hangar in Mahé one hour and forty-five minutes later.

REGULAR CATCHES : bonefish | moustache triggerfish | milkfish
giant trevally | barracuda | bluefin trevally | permit | jobfish
bohar snapper | yellowlipped emperor | sailfish | yellowfin tuna
dogtooth tuna | wahoo | yellowmargin triggerfish | bumphead parrotfish



GETTING THERE

- The Seychelles is a four and a half hour flight from Dubai, Abu Dhabi, and Doha which all serve as a connecting hub for regular international flights from Europe, the United States, Africa and Asia.
- Direct flights to the Seychelles from Paris, Bombay, Nairobi, Mauritius, Antananarivo, Johannesburg, Addis Ababa, Reunion, Colombo, Dar-Es-Salaam, Frankfurt and London.
- Farquhar Atoll is a one-hour forty-five minute flight from Mahé (the main island of the Seychelles).
- The group meets an hour and a half before the scheduled departure time at the IDC hangar terminal for check in. Check in closes 30 minutes prior to departure.
- Scheduled flights depart and return to Mahé each Wednesday.
- Scheduled Flights depart from the IDC Hangar, Pointe Larue, Mahé.
- Flight times are subject to change. Please make sure you confirm your correct flight times with our reservations team.
- Guests are expected to arrive in Mahé the day before their trip as any delay on the day of departure will certainly cause the trip to be missed. It's as important for return flights to be booked the next day after arriving back in Mahé as any delays may cause guests to miss their international flights.
- The Alphonse Island reservations team will assist with all return flight reservations between Mahé and Farquhar at the time of booking.





FARQUHAR ATOLL

Equipped for the Ultimate Fishing Experiences



TACKLE & GEAR

The guest house will have a full range of tackle on sale such as fly lines, flies, clothing, leader, and various other items.



FLEET & GUIDES

TENDER BOATS

Five purpose built skiffs are left on anchorage at Farquhar Atoll, making for a slicker experience. These skiffs will be skippered by our experienced, world class and professional Alphonse Fishing Co. Guides.

OUR GUIDES

The Alphonse Island Fishing Co. guide team along with the Island Conservation Society ensure the fishery at Farquhar is protected from over fishing. The Guides are conservationists at heart and some of them also hold qualifications in the field of ecology.

ALL ALPHONSE FISHING CO. GUIDES:

- Are professional, passionate and extremely experienced with all facets of fly fishing in these remote saltwater destinations.
- Are fluent in English [some speak French and Creole].
- Carry waterproof VHF radios and are in constant communication with each other as well as the base on Farquhar Island.
- Are qualified skippers, with STCW qualifications and have impeccable boat handling skills.
- Have first aid experience.

Angling teams will be split up into groups of two anglers per skiff and guide.



ROD & REEL LOAN

Fly fishing outfits consisting of Thomas and Thomas fly rods and Shilton reels, loaded with 300 yards of Cortland braided backing can be loaned at no charge. Fly lines will need to be purchased from the shop to avoid fishing with lines damaged from previous anglers. There is a full range of flies that are custom tied for Alphonse Fishing Co. destinations on the right hooks and with the correct material. It's important that angler's pre book the rod hire as well as tackle to insure that we have sufficient stock. All tackle sales may be settled at the end of your trip upon check out at the guest house. All rod breakages are for your account and will be billed at US\$150 per rod.

YETI

EST 1969

THOMAS & THOMAS
THE ROD YOU WILL EVENTUALLY OWN

CORTLAND
LINE COMPANY | SINCE 1915

SHILTON
REELS

FLYZ INC.
Testing the Water through Innovation



FARQUHAR ACCOMMODATION



The Guest House

The guest house consists of three double/twin duplex style chalets each containing two separate bedrooms which face the magnificent Farquhar lagoon. Each bedroom is fully air-conditioned, has two single beds and an en-suite bedroom as well as an outdoor shower. Rooms are equipped with 220 volt electricity and have a consistent supply of hot water. There is full housekeeping which includes laundry.

The communal area is equipped with all the necessary features to make your stay one of comfort-in-style, including an exceptional dining area and a fully stocked bar. A full house buffet breakfast is served between 07h00 and 08h00, lunch will be in the form of a packed lunch on the water and dinner will be served between 19h30 – 21h30. The chef prepares a mix of Creole and international dishes and incorporates fresh fish on a daily basis, with fruit and vegetables, which are farmed in the Alphonse garden.

The guest house is fully equipped with snorkelling gear that is available for all guests to use. Sunset events, daily bell ringers and mesmerising encounters with captivating marine life and experiencing the true essence of an untouched paradise, all in picture-perfect surroundings that will enhance every sensation.

AT A GLANCE

- Approx Size..... 38m²
- Occupancy 2 Adults
- Beds 1 King / Twin [on request]
- View..... Verandah with Ocean Views

ROOM HIGHLIGHTS

- Easy beach access, with the ocean only meters away
- Cupboards
- Indoor & outdoor shower
- En-suite bathroom
- Fully air-conditioned

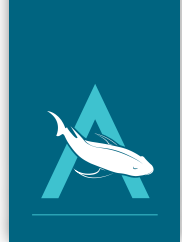


ESSENTIALS & AMENITIES

Air-conditioned | Beach Towels | Indoor & Outdoor Shower
L'Occitane Amenities | Yeti Coolers



SEYCHELLES SPECIES



*The Most Diverse Saltwater
Fly Fishing on the Planet*

FLATS FLY FISHING



BUMPHHEAD PARROTFISH *Bolbometopon muricatum*

Farquhar is one of only two atolls on the planet where targeting bumphead parrotfish on the flats is a realistic expectation, with large numbers of these fish calling Farquhar home. It is not uncommon to find groups of up to 50 fish tailing together on the vast turtle grass flats that Farquhar is famous for. Incredibly powerful and strangely gorgeous, these are often the fish that draw most anglers to Farquhar to tick this off their bucket list.



BONEFISH *Albula vulpes*

Farquhar has an extremely healthy population of bonefish that frequent the flats in the six to nine pounds range. The Seychelles is renowned for world-class bone fishing and Farquhar atoll offers exactly that. High quality bone fishing is found on both neap and spring tides. Large expanses of white sand flats will give anglers the opportunity to test their skills at large groups and single tailing fish.



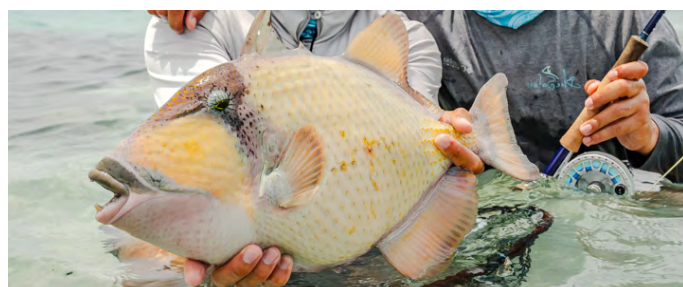
MOUSTACHE TRIGGERFISH *Balistoides viridescens*

A colourful and energetic feeder that tails when feeding in the shallows, both up on the flats and on the reef edges. Known as a giant, titan or moustache triggerfish, it is the largest of the three species that can be caught at Farquhar. The Alphonse Guides were the first to develop the flies and techniques to deceive these fish, as well as to introduce triggerfish as a much sought-after trophy for flats fisherman.



INDO-PACIFIC PERMIT *Trachinotus blochii*

Also known as pompano, it is a member of the Carangid family and a relative of the Atlantic permit. Farquhar has a healthy population of permit. The permit on Farquhar tend to be found along the large white sand flats on the eastern side of the atoll. The Alphonse guides have near-perfected the art of catching these fish, considered the "Holy Grail" of saltwater flyfishing!



YELLOWMARGIN TRIGGERFISH

Pseudobalistes flavimarginatus

Farquhar offers great opportunities when it comes to targeting yellowmargin triggerfish. These colourful characters, will test even the most seasoned anglers' patience. With their tenacious and aggressive attitude and sometimes discerning taste, they can be a true trophy catch on the flats.



MILKFISH *Chanos chanos*

A finicky filter feeder and a ferocious acrobatic fighter reaching lengths in excess of 180 cm and weights over 50 lbs. The Alphonse Guides were the first to develop the flies and techniques to catch this sought-after trophy. The milkfish at Farquhar are often found inside the lagoon feeding on scum lines or offshore in large numbers.



GIANT TREVALLY *Caranx ignobilis*

Farquhar has become synonymous with being the only place on the planet where GT's have been recorded to feed on birds. Vast numbers of Terns gather around Goulette island drawing large numbers of GT's from the surrounding reefs to take advantage of this abundant protein source. The giant trevally fishing on Farquhar is of a high quality. Consistent numbers of fish are handled by guests every season. The GT fishing can be experienced on the flats and on the reefs off shore.



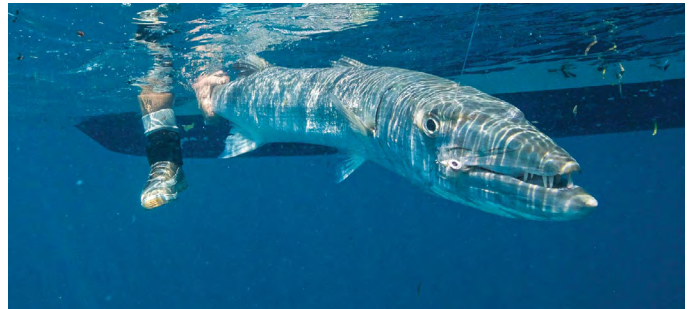
SEYCHELLES SPECIES

BLUE WATER FLY FISHING & GAME FISHING



BLUEFIN TREVALLY *Caranxa melampygus*

Bluefin trevally are distributed throughout the tropical waters of the world with populations varying according to fishing pressure. Areas like Farquhar, that have shallow lagoons, support healthy populations of juveniles, which contribute immensely to the overall population. The typical size of fish would be from 18 cm to 80 cm, with an 80 cm specimen being a trophy.



BARRACUDA *Sphyraena barracuda*

These fearsome looking creatures are extremely fast and jump when hooked. Larger barracuda, which grow to over 240cm, are more or less solitary in their habits and hunt alone when on the flats. Farquhar is home to incredible specimens.



INDO-PACIFIC SAILFISH *Istiophorus platypterus*

The sailfish is the fastest fish in the sea and named after its large dorsal fin, which extends most of the length of its body. These acrobatic fighters are found in the deeper water that surrounds Farquhar in good numbers.



WAHOO *Acanthocybium solandri*

The Seychelles waters are known for their incredible numbers of wahoo due to the rich currents that flow close to the atolls. Reaching speeds of up to 80 kilometres per hour, the wahoo is the third fastest fish in the sea. The wahoo that frequent the Farquhar waters range between 10 to 50 lbs.



DOGTUOTH TUNA *Gymnosarda unicolor*

Dogtooth tuna are a resident-pelagic fish that are found along the drop-offs in good numbers at Farquhar. They patrol continental shelf drop-offs and frequent depths between 50 and 150 ft, which are found relatively close to shore around the atoll. These fish can be targeted by dredging with a heavy sink tip fly line and a Mega Clouser.



YELLOWFIN TUNA *Thunnus albacares*

Farquhar is surrounded, at close proximity, by sheer drop-offs and ledges. Yellowfin tuna tend to follow the bait as they migrate through the Seychelles waters therefore Farquhar usually has good numbers of yellowfin tuna year round.



FARQUHAR EXPERIENCES

Over and Above our World Class Fishing...



Farquhar Atoll needs to be experienced to be believed... The geographical isolation of Farquhar Atoll creates an atmosphere of undisturbed solitude where guests forget about the outside world and immerse themselves in all the natural wonders and unique experiences that the island has to offer.

**** COMPLIMENTARY ACTIVITIES ON FARQUHAR ATOLL. ALL ACTIVITIES ARE WEATHER AND TIDE PERMITTING.**

BLUEWATER FISHING

Experience offshore fishing like never before... The unspoilt waters of the Farquhar Atoll are home to a vast variety of bluewater species. The structure and sheer drop-offs are idyllic for species such as sailfish, wahoo, dogtooth tuna, yellow fin tuna and dorado. On each given day there is an opportunity to fight the reel and target these species for either a full or half day.

SUNDOWNERS ON THE BEACH**

A cocktail or an ice cold beer can be enjoyed while watching the picturesque sun set above the waters.

FLATS LUNCH**

A special treat offered by Farquhar is the amazing Flats Lunch. A dining atmosphere like no other. Guests get to revel in the sheer beauty of the flats whilst feasting on a delicious buffet accompanied by an ice cold beverage.

DE-TACKLING DRINKS AND SNACKS**

The guides de-tackle, guests enjoy drinks with fellow nature, fishing and diver partners celebrating the week's achievements. Remember, every fish and new sighting counts!







THE FINER DETAILS

Things to Take Note of...

INCLUSIONS & EXCLUSIONS

RATES INCLUDE

- 7 Night package with all meals included
- Private charter flight
- Six days fully guided fishing
- Max Pax: 10 anglers (2 anglers per 1 guide & skiff)
- Tender boat and fuel
- Rod & reel rental
- Soft drinks during activities, water, tea and coffee
- Wine with dinner
- Laundry

RATES EXCLUDE

- International Flights
- Accommodation and transfers in Mahé
- Beverages
- Telephone and internet charges
- Travel and medical insurance
- Tackle and flies
- Gratuities
- Conservation donation of US\$175

GENERAL INFORMATION

WEATHER

Seychelles is typically hot and somewhat humid with midday temperatures hovering at $\pm 35^{\circ}$ Celsius [$\pm 90^{\circ}$ Fahrenheit]. The evenings are also invariably warm with the exception of the first and last few weeks of the season, when there may be a strong, cooling breeze.

THE FISHING SEASON AT FARQUHAR

The season runs from September until early May. Due to Farquhar being a further 3° south of Alphonse Island, the south-easterly monsoon winds blow insistently from June to August. We stick to the fore mentioned dates to ensure you have an unforgettable fishing experience.

HOURS OF DAYLIGHT

Due to its proximity to the equator, there is no real twilight in the Seychelles. The sun rises quickly at around 06h15, and sets with equal swiftness at about 18h30. This varies by only minutes throughout the year, giving nearly a full 12 hours of daylight for 365 days a year.

CONSERVATION DONATION

There is a conservation donation of US\$175 per week [US\$25 per day]. This will be included on your confirmation invoice and is settled prior to arrival. All packages exclude this conservation donation which is given to the Island Conservation Society for the preservation of nature in the Seychelles.

FROM SCENE OF ACCIDENT MEDIVAC INSURANCE

You are required to obtain "From Scene of Accident Medivac Insurance". Please supply these details prior to arrival on the Island. Alphonse Island Lodge Limited and agents cannot assume any financial responsibility for consequences incurred if this has not been obtained.

TRAVEL INSURANCE

You are required to obtain travel insurance that will cover any costs incurred due to flight or trip delays for any reason.

INDEMNITY FORM

You are required to sign an indemnity form before boarding the transfer vessel.

INOCULATIONS & HEALTH

No inoculations are legally required for entry. However, you may want to check with your local immunization and inoculation clinic for their recommendations on health precautions for travel to the Seychelles. Some travellers elect to protect themselves against hepatitis A with an immunoglobulin injection [short-term protection] or the longer lasting vaccine. Other inoculations may be required if you are planning a trip extension to parts of Africa.

FLIGHT TIMES

NB: Please check flight times as they vary. The flights leave Mahé from the IDC hangar and arrive on Farquhar one hour and forty-five minutes later. It then departs Farquhar 45 minutes after arriving and will land back at the IDC Hangar two-and-a-half hours after departing.

LUGGAGE RESTRICTIONS

Your check in luggage is strictly limited to 15 kg [33 pounds] per person, and 5 kg [12 pounds] carry-on luggage. This is a strict policy that allows us to deliver fresh food produce to the boat. If it is not possible to load extra luggage, it will have to be repacked and left in Mahé until your return.

Please adhere to the limits. It is suggested that lighter soft-shell luggage is used. Pack a separate bag with excess equipment to avoid having to repack at the airport. Excess luggage can be left with an Alphonse Fishing Co. representative at the hangar.

FISHING CLOTHING

Lightweight long sleeve shirts and long pants that can be zipped off are recommended. Sunscreen with a minimum protection factor of at least 30 is required for any exposed skin areas. A buff is of great importance for sun protection of your face. Sun gloves will help protect your hands. A packing list will be supplied in your Pre-Trip Information.

COMMUNICATION

The phone service is operated via satellite and there is no Wi-Fi.

Guests are able to purchase phone cards from the guesthouse manager to make calls which cost US\$15. These are payable in cash to the guesthouse manager.

We advise that you leave the contact details of Alphonse Island with your family and friends. The lodge satellite phone is only switched on at certain times for logistical updates so a message can be passed onto you at this time.

Alphonse Island Number:

+248-4-22-9700 [GMT+04:00].

ELECTRICITY SUPPLY

The lodge has 24-hour electrical current [240 volt, 50 cycles AC] with British plug points. A European electrical current adapter [three-point, square-pin] is necessary.

WATER CONSUMPTION

There is a desalination plant at the guest house and the water from the faucets is safe to drink. We do not stock mineral water and will only supply it if you specifically requested prior to your arrival.

BEVERAGES

Should you have any special beverage requirements please let us know so we can ensure it is on location for your arrival. There will be Seybrew beer and a selection of spirits and wine on location. It's important to remember that when you are on Farquhar, it is a "dry island" so we request that you do not give any alcohol to the local staff.

GRATUITY GUIDELINE

If you wish to show appreciation to the general staff, we suggest a US\$250 per guest per week or US\$35 per day guideline. This is to be left with the guest house manager upon departure for equal distribution.

For the Fly Fishing Guides a US\$650 per angler per week, which is given to the head guide at the end of the week.

All tips are preferred to be paid in cash. If you wish to pay your tips by credit card a 5% credit card levy will apply.

CURRENCY

You do not need to change your US\$ [US Dollars], € [Euros] or £ [Pounds] into the local currency SCR [Seychelles Rupees]. The guest house accepts Rupees, Dollars, Euros and Pounds. Please bring sufficient cash to settle tackle bills, tips and other costs incurred. There is a credit card facility onsite. All tabs settled by credit card will incur a 5% credit card levy.

DUTY FREE ALLOWANCE

200 cigarettes or 50 cigars, one litre spirits and two litres wine.



WADING

The hard white sand, turtlegrass or coral flats of the Seychelles make for easy wading, separating it from other destinations in the world. As most of the fishing will be done whilst wading, good protective footwear is essential. Standard diver's neoprene booties with a reinforced rubber sole are not appropriate. A more protective flats wading boots must be worn. There are a number of purpose made boots on the market, which are excellent. See suggested brands in tackle and gear check list at the end of this document.

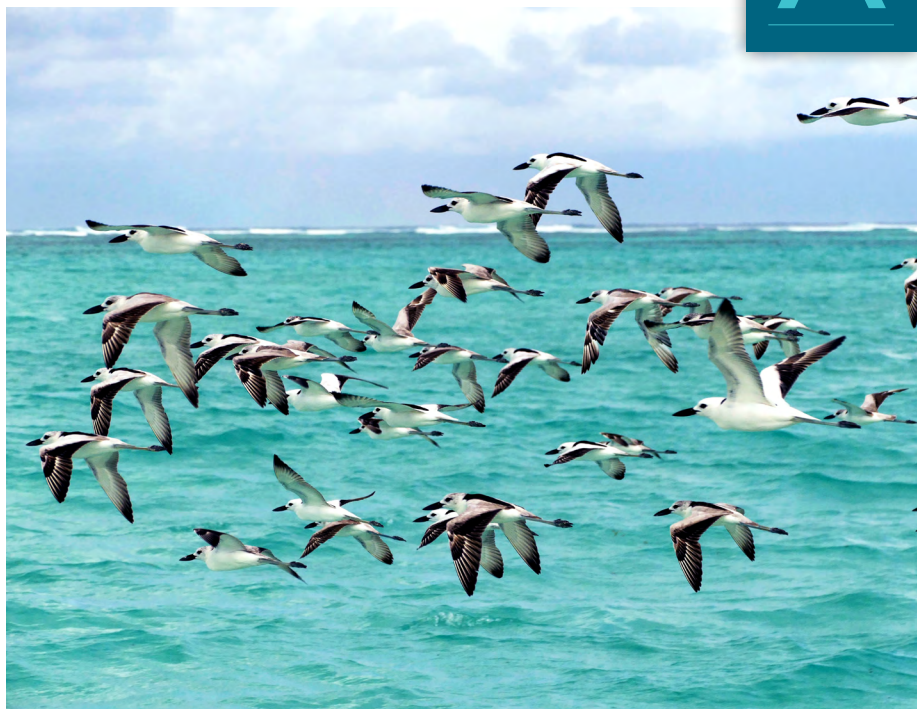
DANGERS TO WATCH OUT FOR WHILST WADING

Stingrays: Some atolls host large numbers of stingrays on the flats. Most species have a venomous, barbed spine near the base of their tails that they can use for defence. These spines can inflict a nasty wound, should an unwary wader inadvertently stand on a stingray. These often sedentary or slow moving fish are easy to see and avoid, and to date no anglers have had any problems with these docile creatures.

Stonefish: Found mainly in the shallows on the coral edges of reef flats, stone-fish are not only lethally toxic but are also very well camouflaged and will not move unless touched. A stonefish has 13 strong hollow spines through which it injects its venom and these will pass through a thin rubber sole with ease. For this reason all wading should be done wearing thick-soled wading boots.

Cone Shells: Fish-eating cones live in crevices among the coral or half covered by sand awaiting their prey which they attack by shooting out a dart that injects a paralysing venom. The venom from certain species can be fatal, how-ever proper footwear will ensure your safety.

Sharks: Frequently encountered whilst wading in Seychelles, sharks are inquisitive and may pause for an instant and give you the once over, but if you remain calm and quietly stand your ground, these magnificent creatures will not bother you.



PAYMENT & BOOKING INFORMATION

CREDIT CARD EXCHANGE

The following credit cards are accepted:

- MasterCard • Visa
- American Express is not accepted.

CURRENCIES ACCEPTED

- Seychelles Rupee • USD • Euro • GBP

CANCELLATIONS

- A 10% fee shall be levied if the reservation is moved to an alternative date within the same season.
- A fee of 10% shall be levied if cancellation is more than 180 days prior to arrival.
- A fee of 50% shall be levied if cancellation is between 180 and 90 days prior to arrival.
- A fee of 100% shall be levied if cancellation is 90 days or less prior to arrival.
- All cancellations and provisional bookings must be confirmed in writing.

PAYMENTS

- Reservations will be held for two weeks.
- A deposit of 50% of the total package charge is required to confirm your booking and the balance is payable in full three months prior to arrival.
- All extras will be settled at the hotel on departure.

TARIFFS ARE QUOTED

- Inclusive of VAT in US Dollars
- Subject to availability

TARIFF CHANGES

All tariffs are subject to change, without prior notice, however rates quoted for confirmed bookings will be honoured.

VAT [a Government tax]

A Government Tax [VAT] of 15% is applicable on all items payable.

BANKING DETAILS

Beneficiary	Alphonse Island Lodge LTD
Bank Name	Mauritius Commercial Bank [SEY] LTD
Bank Address	Victoria Branch P O Box 122, Mahé, Seychelles
Account No	00000 254557
SWIFT CODE	MCBLSCSC
IBAN	SC53 MCBL 0607 0000 0000 0025 4557 USD



ALPHONSE
FISHING COMPANY
SEYCHELLES

CONTACT DETAILS

ISLAND

Telephone +248 422 97 00
+248 422 90 30

E-mail info@alphonsefishingco.com

RESERVATIONS

E-mail reservations@alphonsefishingco.com

MARKETING

E-mail marketing@alphonse-island.com

Postal Alphonse Island Lodge

Address P O Box 378, Victoria, Mahé
Republic of Seychelles

Website www.alphonsefishingco.com

Facebook [alphonse.island](https://www.facebook.com/alphonse.island)

Blog www.alphonse-island.com/en/blog

